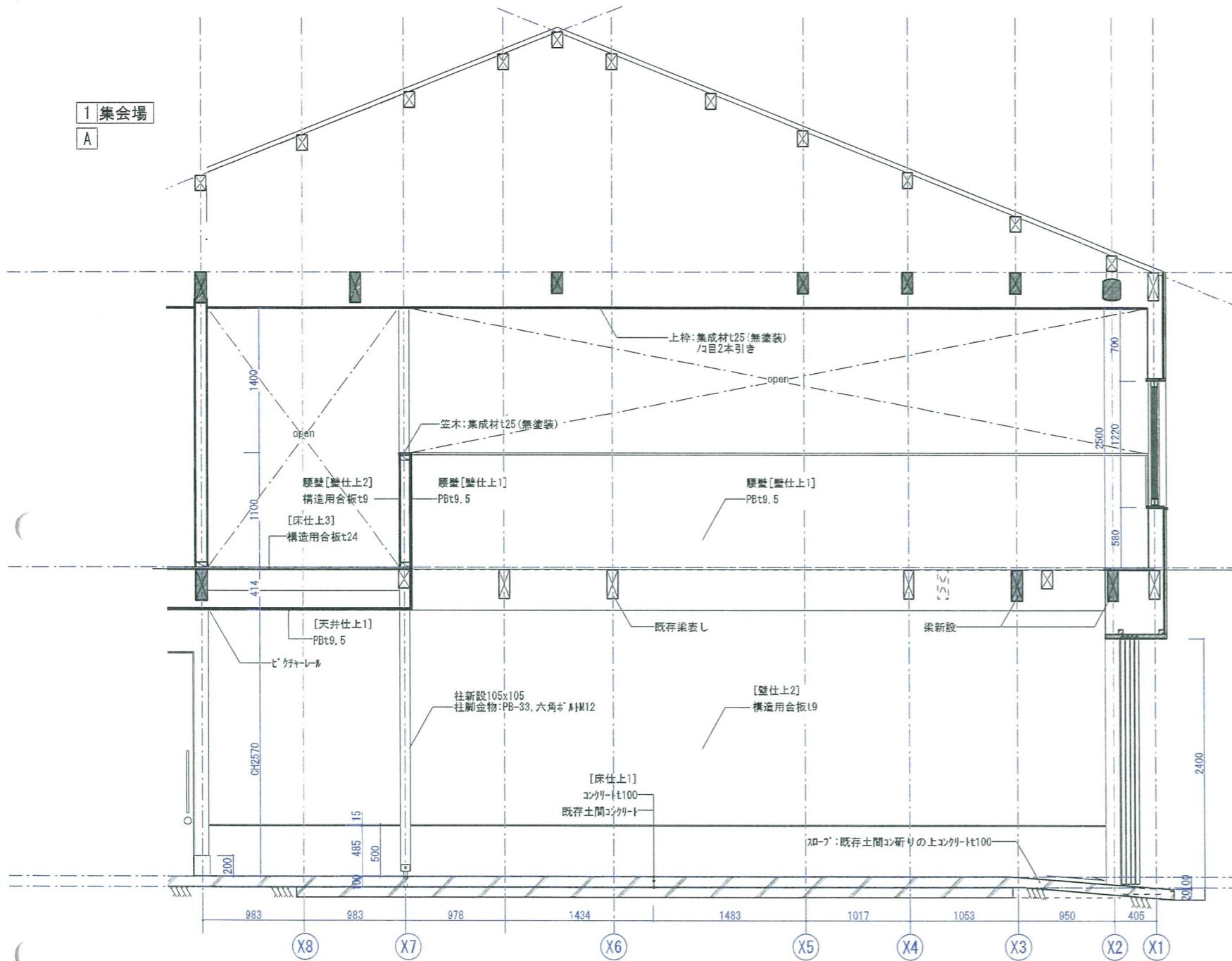
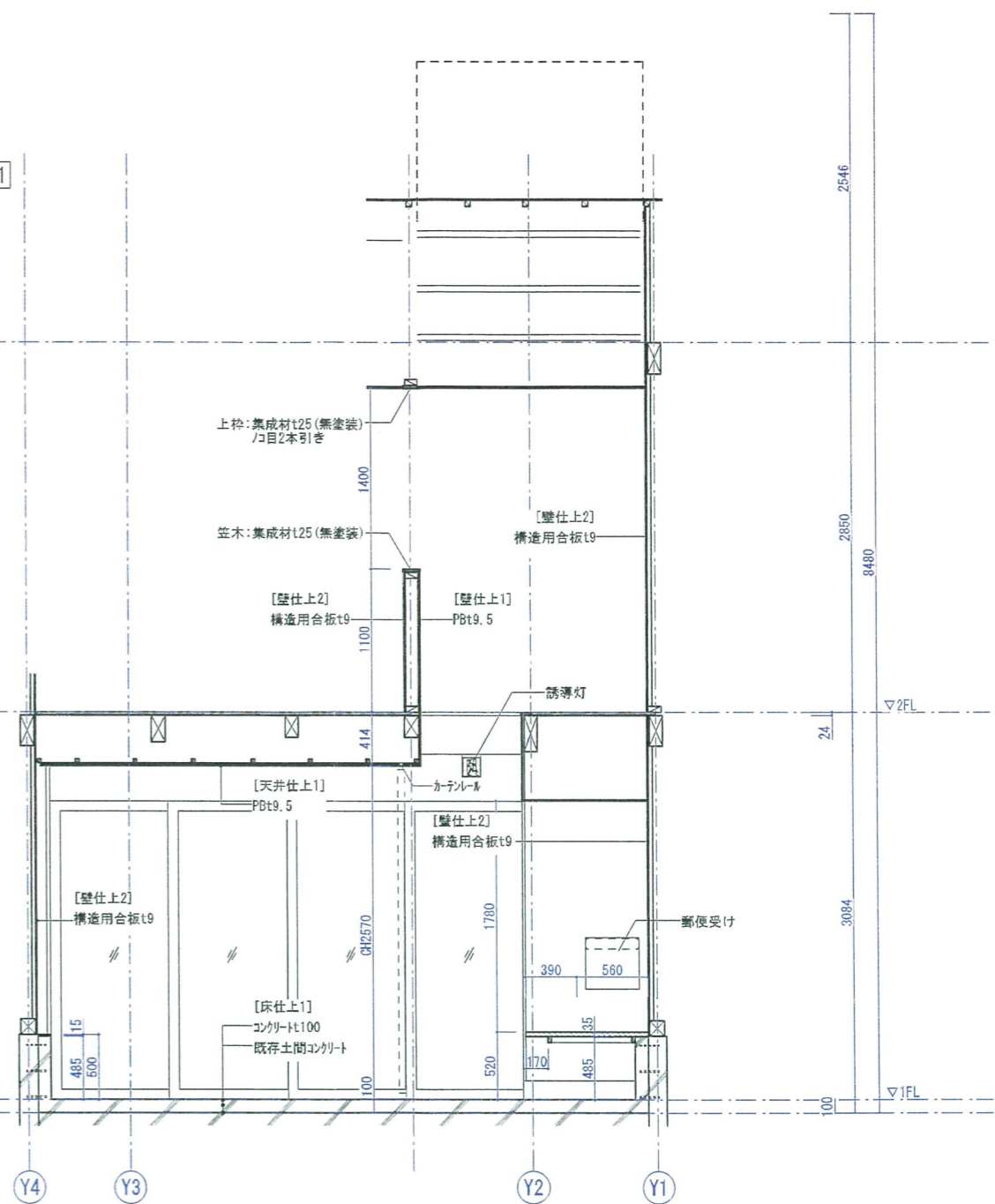


1 集会場

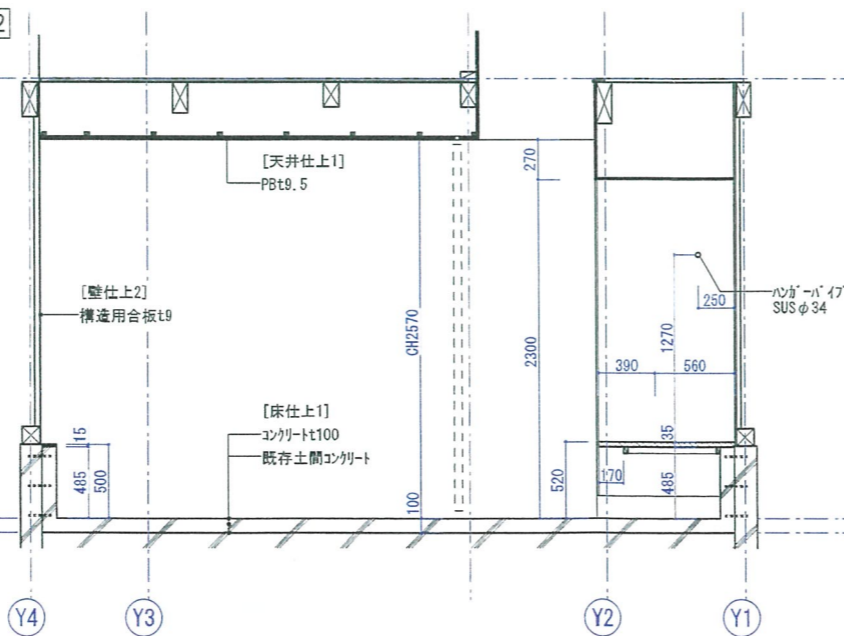
A



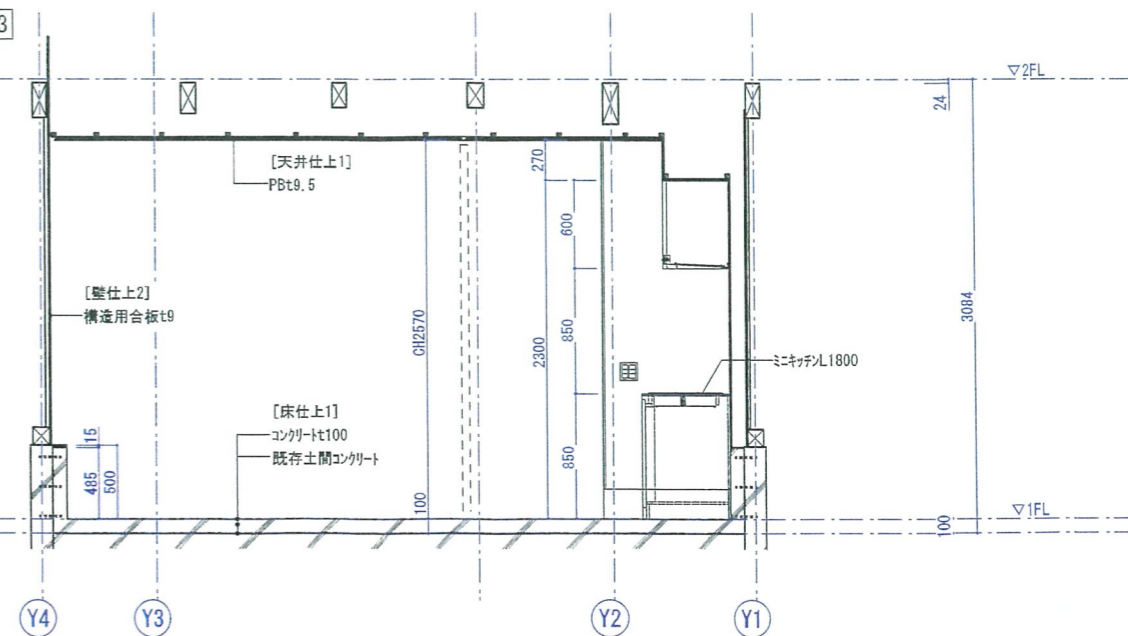
B-1



B-2



B-3



title : 展開図1

scale : 1/50

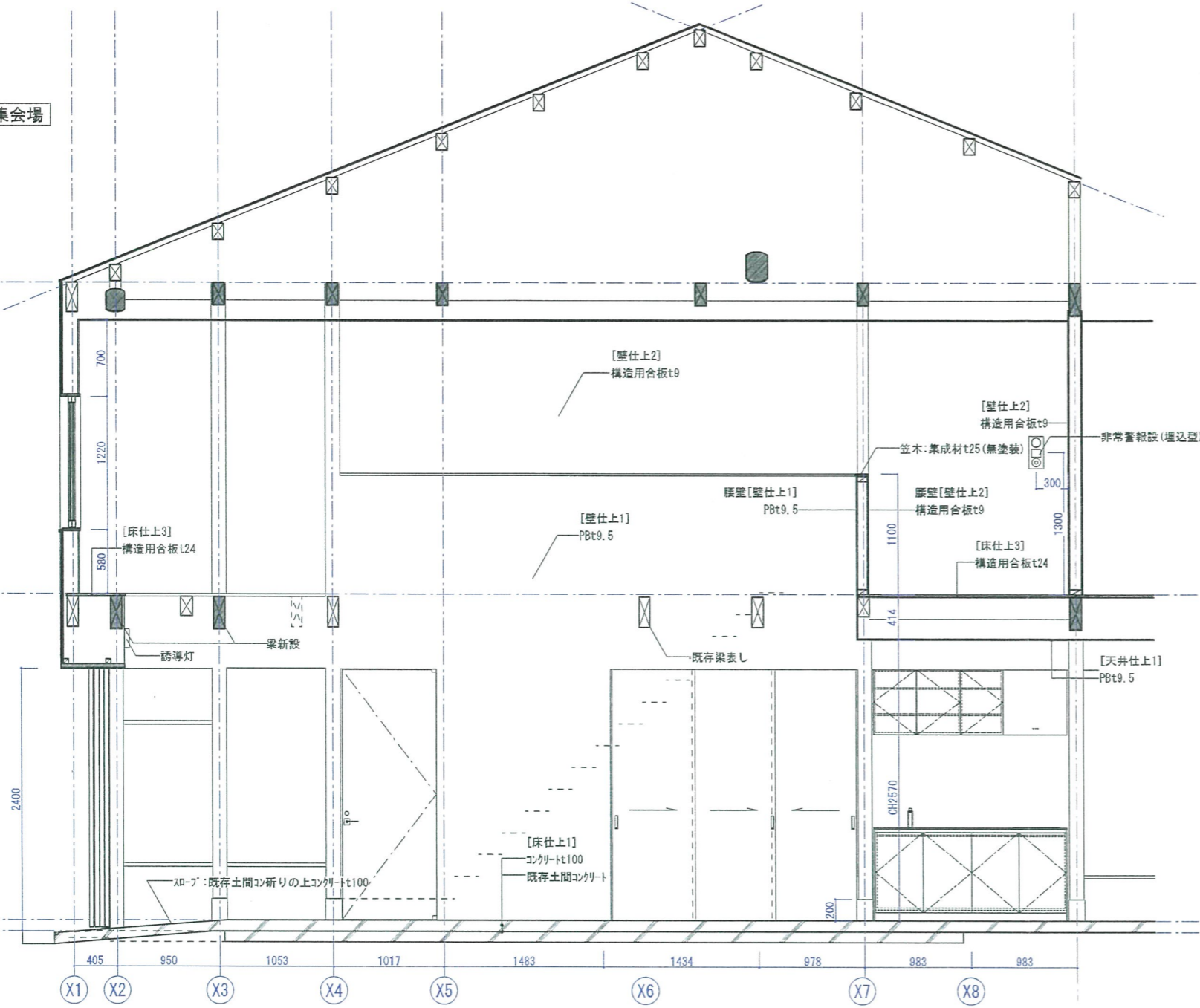
date :

No. A-08

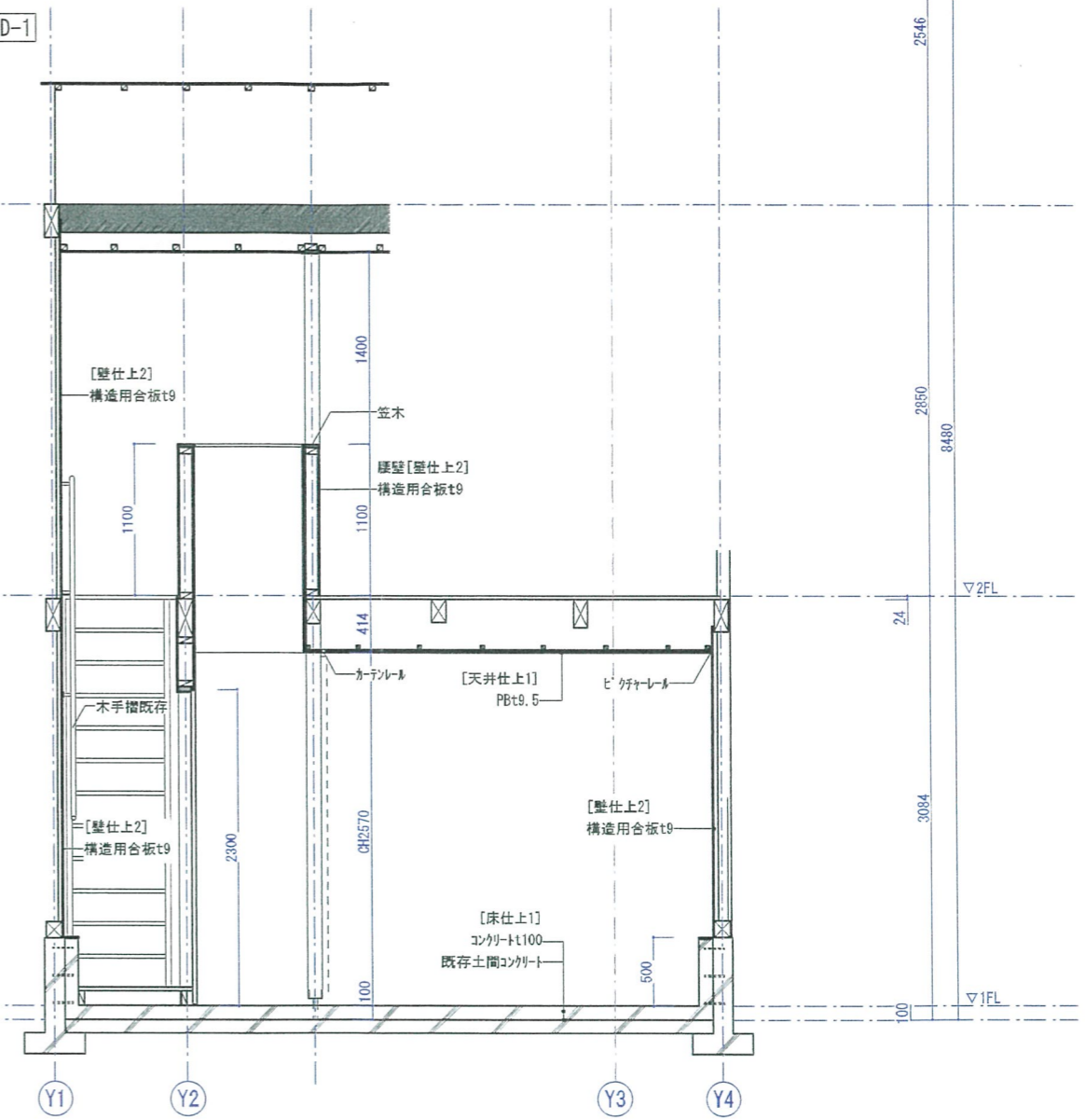


1 集会場

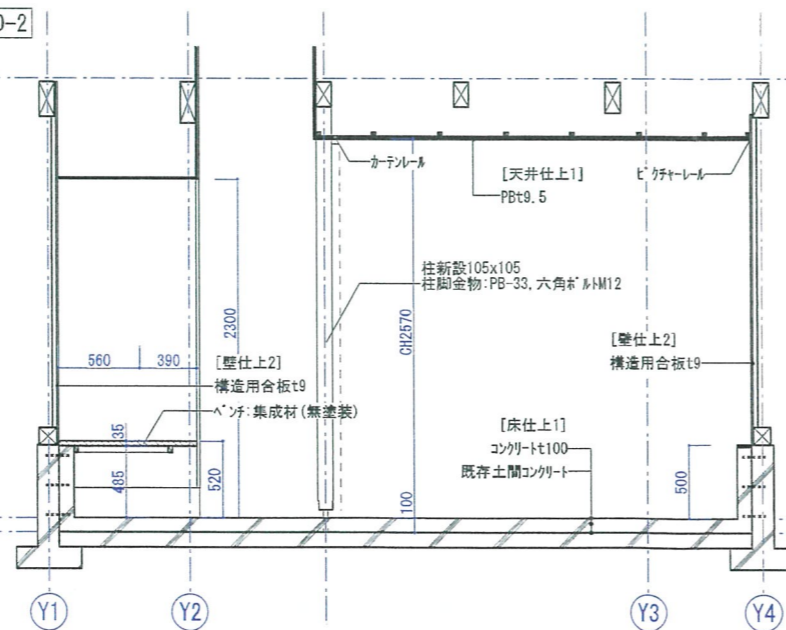
C



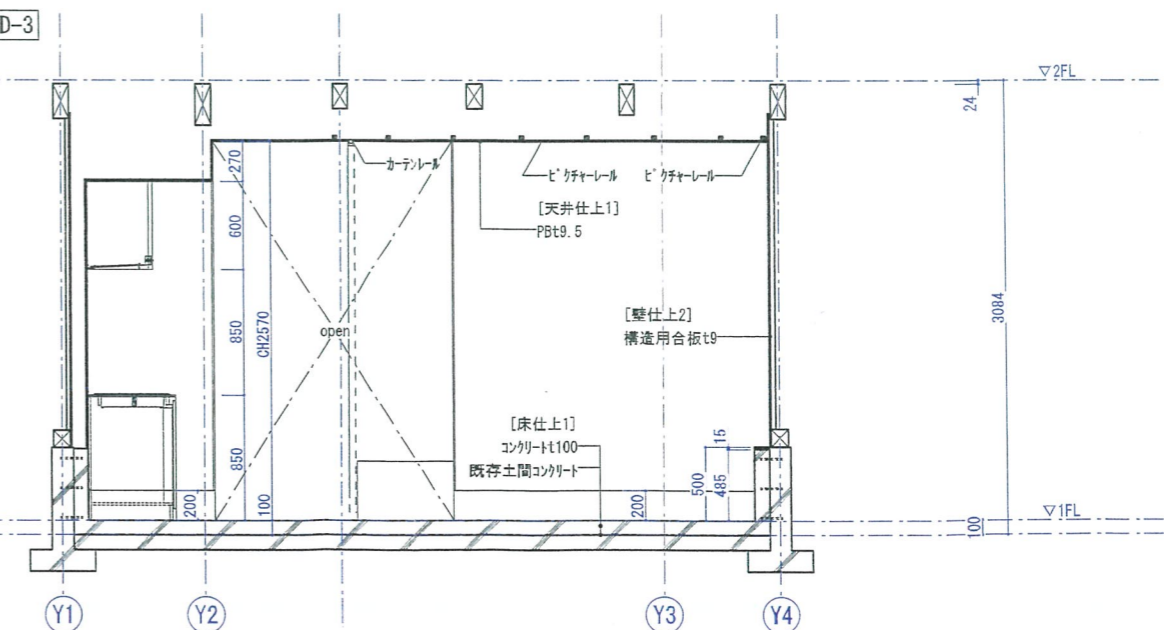
D-1



D-2

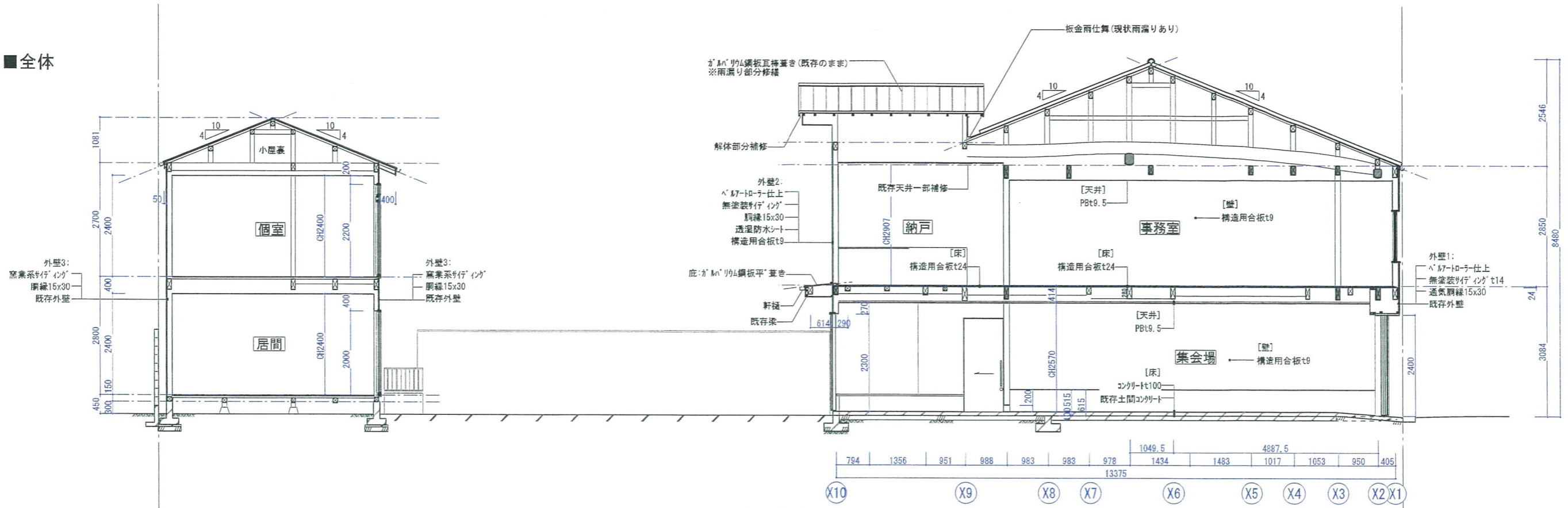


D-3



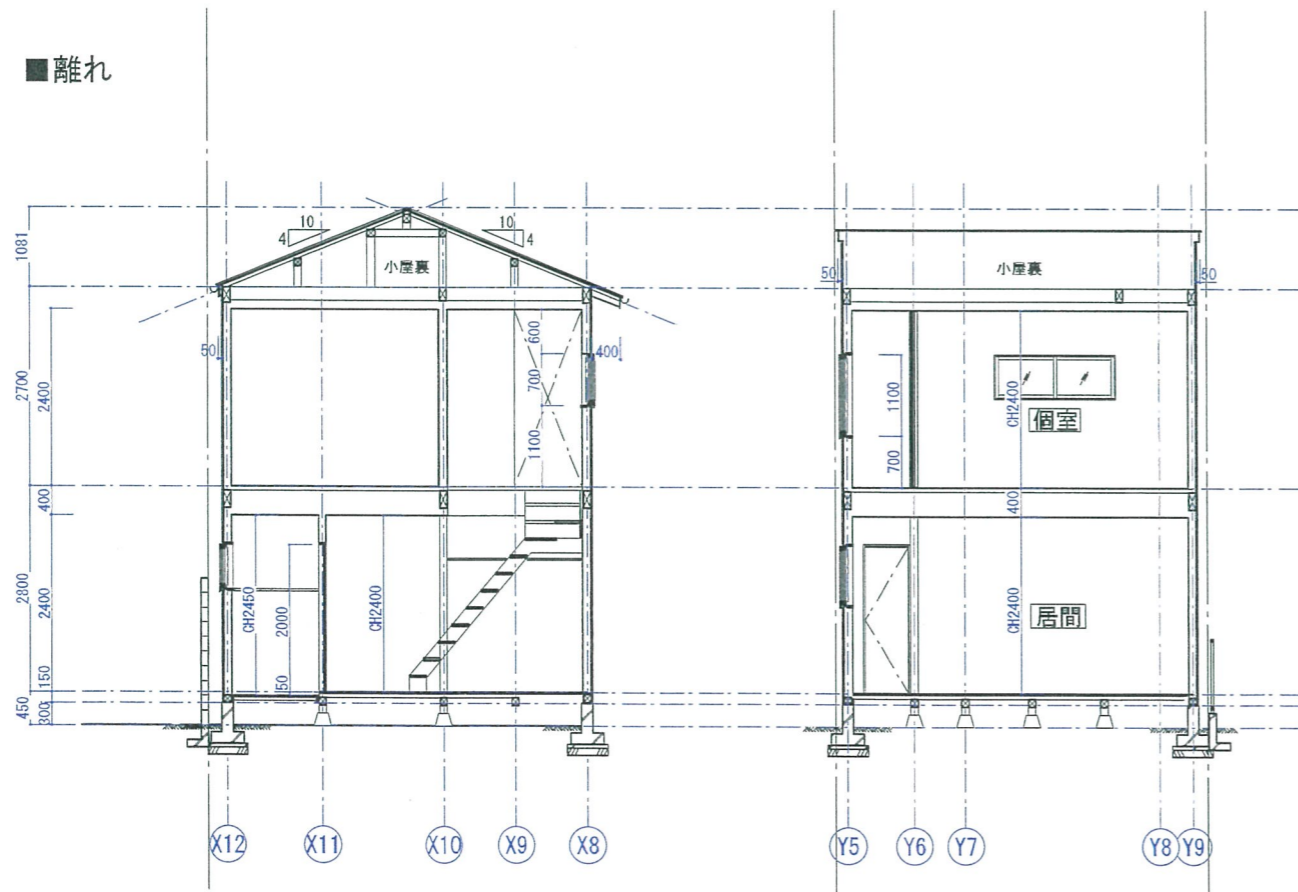


■全体



A-A' 断面図 1/100

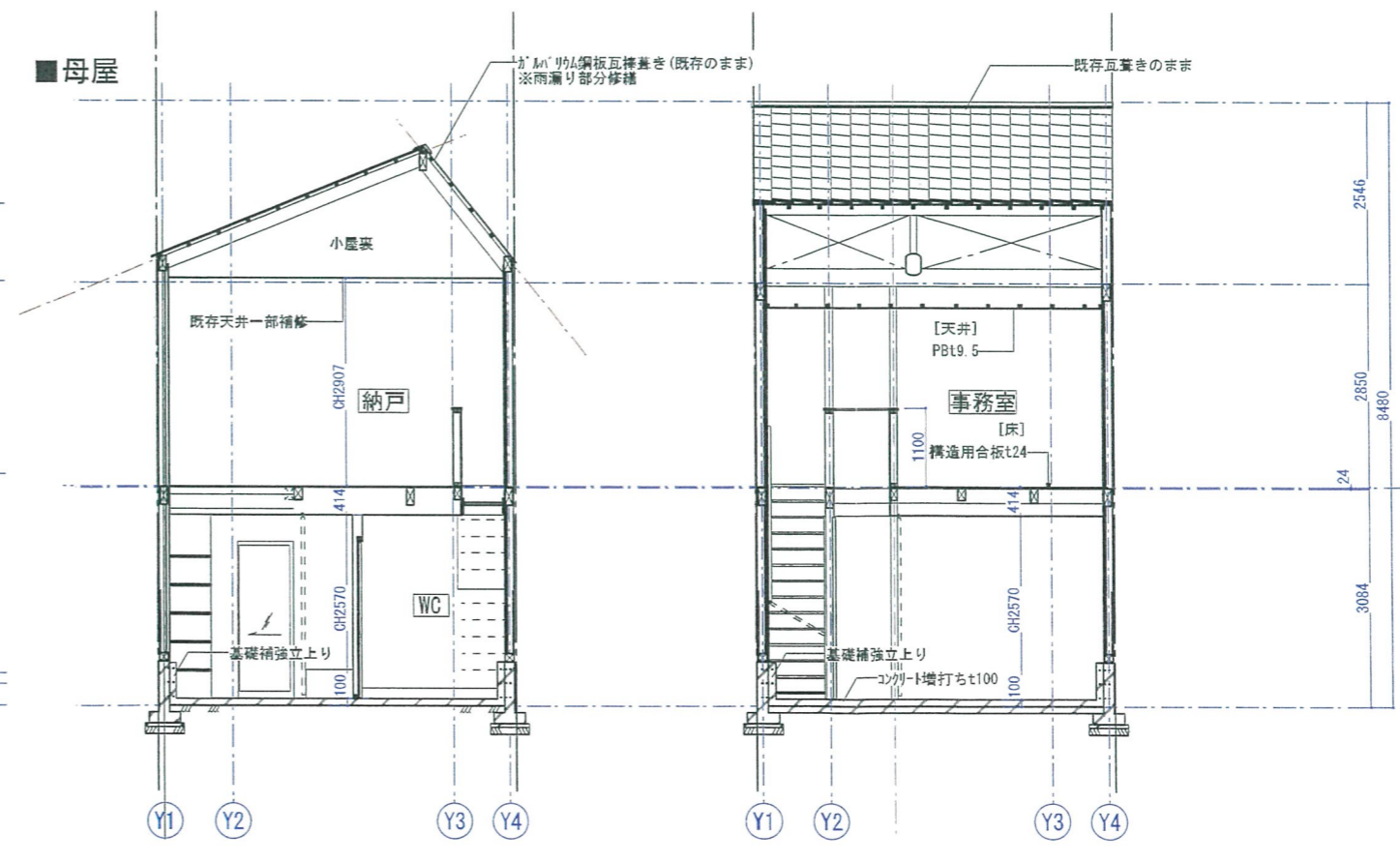
■離れ



B-B' 断面図 1/100

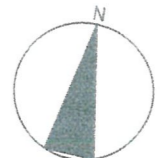
C-C' 断面図 1/100

■母屋



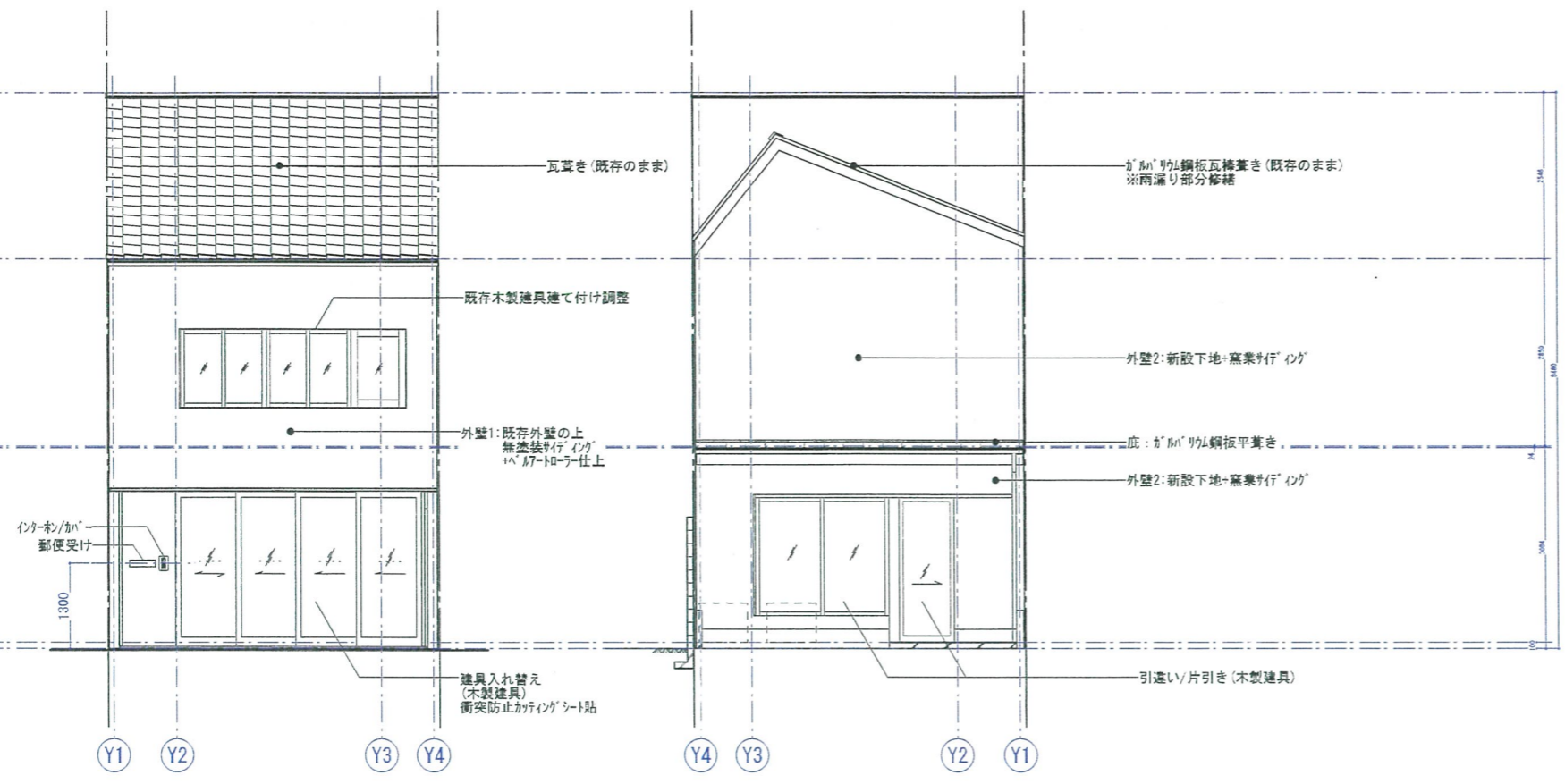
C-C' 断面図 1/100

D-D' 断面図 1/100





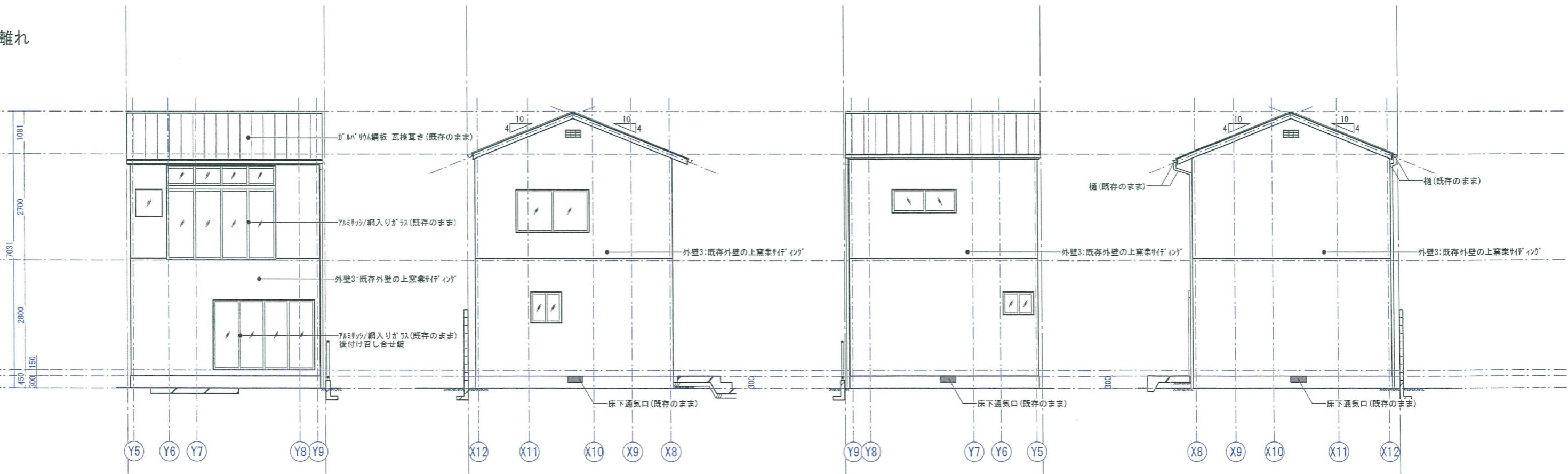
■母屋



東立面図 1/100

西立面図 1/100

■離れ



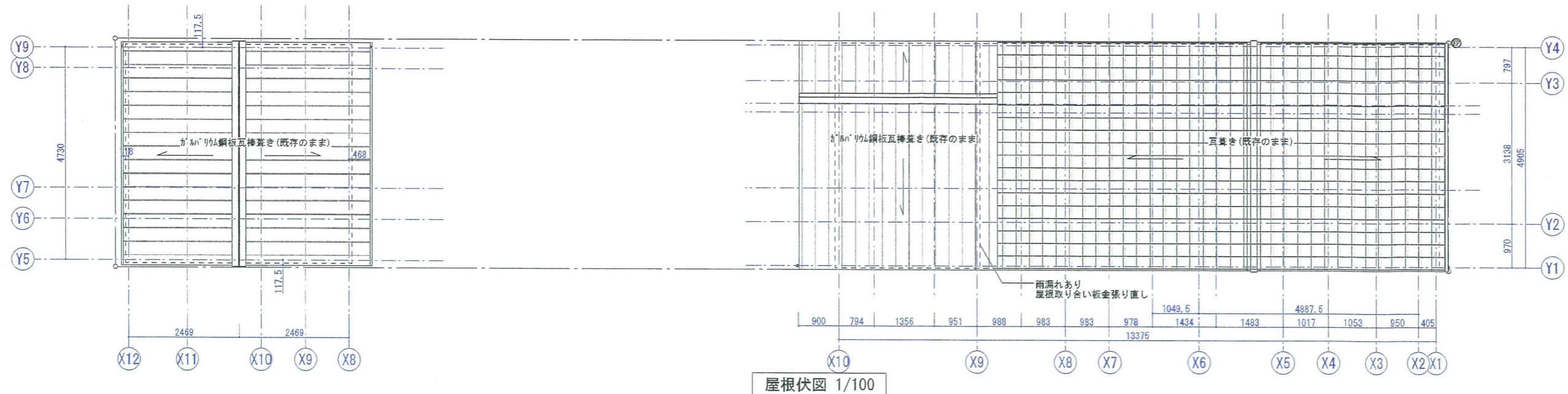
東立面図 1/100

南立面図 1/100

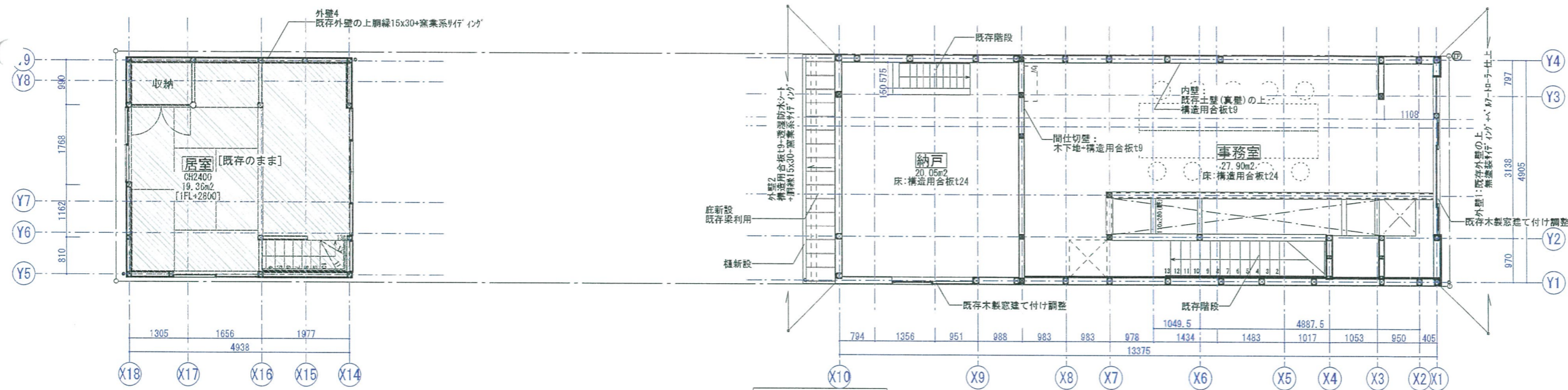
西立面図 1/100

北立面図 1/100

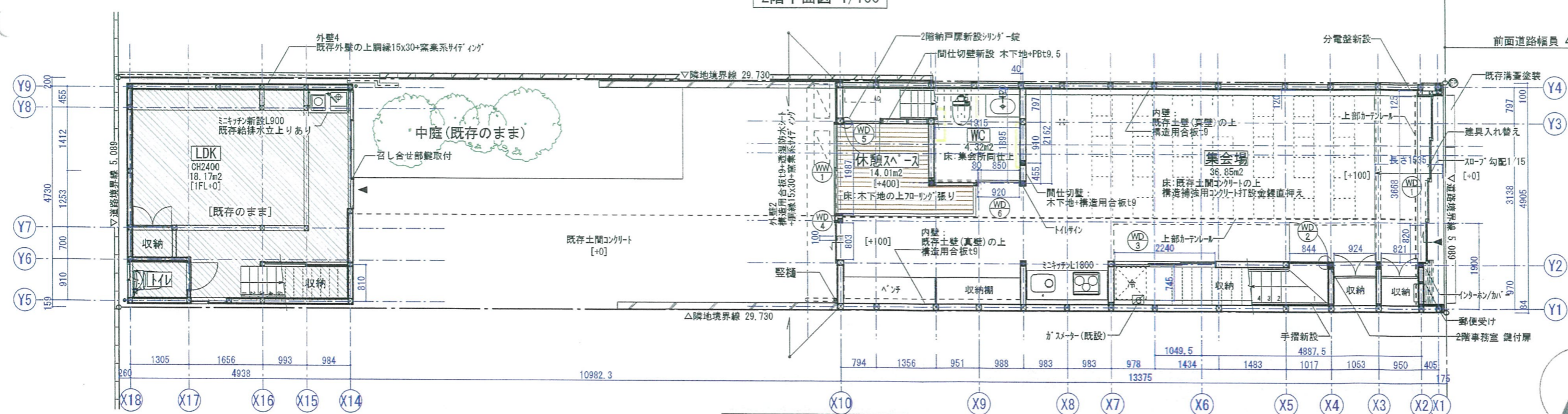




屋根伏図 1/100



2階平面図 1/100



配置図兼1階平面図 1/100

**計画概要**

□敷地面積	: 151.39 m <sup>2</sup> (45.80坪)
□建築面積	: 88.96 m <sup>2</sup> (26.91坪)
□建蔽率	: 58.76 %
□1階床面積	: 86.98 m <sup>2</sup>
□2階床面積	: 72.05 m <sup>2</sup>
□延床面積	: 159.03 m <sup>2</sup> (48.11坪)
[母屋]	
1階床面積	: 63.62 m <sup>2</sup> (19.25坪)
2階床面積	: 56.46 m <sup>2</sup> (14.73坪)
[離れ]	
1階床面積	: 23.36 m <sup>2</sup> (7.07坪)
2階床面積	: 23.36 m <sup>2</sup> (7.07坪)
□吹抜面積	: 9.14 m <sup>2</sup> (5.12坪)
□テラス面積	: 0.00 m <sup>2</sup> (0.00坪)
□施工床面積	: 129.22m <sup>2</sup> (39.09坪)
	(63.62+56.46+9.14)
減築面積	: 72.85 m <sup>2</sup> (22.04坪)

**凡例**

- : 本工事範囲外
- : 柱・梁新設
- : 耐力壁



4 事務室

